

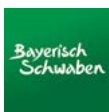
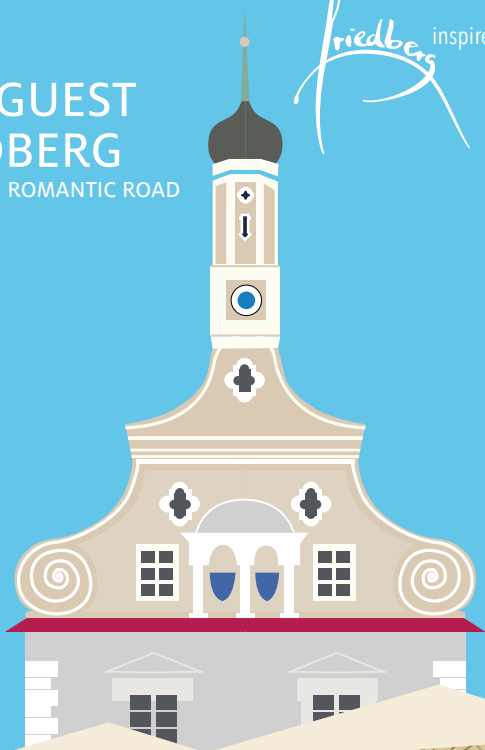


EXPERIENCE FRIEDBERG

BE OUR GUEST IN FRIEDBERG

AND EXPLORE THE ROMANTIC ROAD

Friedberg inspires





WELCOME!



A very warm welcome to Friedberg, our historic town on the Romantic Road. Whether you're spending your holidays here, meeting up with friends or doing business, we're delighted that you've come to Friedberg and hope you have an unforgettable stay! Friedberg is blessed with a unique combination of factors that give it a great quality of life: our charming historic old town with all its shops, cosy inns, stylish restaurants and welcoming cafés. Visitors can expect a wide range of attractive cultural events all year round. Plus, you can explore Friedberg and the surrounding area on its well-signposted hiking and cycling tracks. Our Tourist Information team will be happy to advise you.

Roland Eichmann, Mayor of Friedberg

DEAR GUESTS,

The Tourist Information Centre extends our warmest welcome to you! In addition to general information on the town's sights, this brochure provides information about accommodation and local gastronomy.

The Tourist Information team will be happy to assist you with any tourism queries you may have. We can organise guided and themed tours on a date of your choice as well as one-day programmes for association outings and corporate days in Friedberg and its surrounding area. The information desk in the historic town hall has a selection of books about Friedberg and small souvenirs. Extensive free information and brochures on Friedberg and the Wittelsbacher Land region are available here, too.



CONTACT:

Friedberg Tourist Information, Marienplatz 5, 86316 Friedberg
 Phone +49 821 6002-450, -451, 436 or
touristinfo@friedberg.de www.friedberg.de/tourismus,
facebook.com/friedberginbayern,
instagram.com/friedberg_bayern

NOTE

For legal reasons we cannot offer accommodation services, please contact the mentioned hosts directly with your booking request.

All the information about accommodation and gastronomy is provided by the respective companies. The publisher accepts no responsibility for the accuracy and completeness of this brochure. Please enquire about current prices at the time of booking. In the event of a change to the gastronomy on offer, information about a particular restaurant may no longer be valid.



THE TOWN'S HISTORY

Friedberg is located in the heart of the Wittelsbacher Land, a region steeped in history. The town, which is listed, was founded in 1264 by Duke Ludwig II of Wittelsbach and his nephew Konradin, the last Staufer.

Planned with a rectangular layout, the townscape and its defensive wall next to the former fortress, today's Wittelsbach Castle, fully refurbished, bear impressive witness to the heyday of the town's history. With the support of the Dukes of Wittelsbach, Friedberg developed into an important watch- and clockmaking town of international renown in the 17th and 18th centuries.

Since 1989, the historic old town festival "Friedberger Zeit", which takes place every three years in July, has been a reminder of this golden age. Over the course of 10 days, the people of Friedberg dress up in their historic garments and revel in the stylishly festive hustle and bustle, against the backdrop of the historic old town.



WHAT TO SEE AND DO IN FRIEDBERG



WITTELSBACH CASTLE



EXPERIENCING HISTORY - SAVOURING THE PRESENT

The emblem of the town, visible from afar, Wittelsbach Castle, has undergone a multifaceted transformation throughout history. From a fortress founded in 1257, it became a widow's seat and a faience manufactory and later an administrative building and museum of local history. Today, the lavishly renovated building houses the new culture and events centre. Hosting an interesting variety of cultural events, concerts, cabaret, readings and festivals await the guest. This historic site has different rooms that can hold between 20 and 400 people and the magnificent castle courtyard boasts a unique ambience for events, conventions and private celebrations.

CONTACT:

Veranstaltungsmanagement
Wittelsbacher Schloss,
Schlossstr. 21, 86316 Friedberg
Phone +49 821 6002-460,
schloss@friedberg.de
www.wittelsbacher-schloss.de





MUSEUM IN THE WITTELSBACH CASTLE



Friedberg's watches, faïences and the history of the town and the castle are on display in an exhibition which is as modern as it is timeless. Sections about Friedberg's archaeology, religious and modern art complete the extensive range. With hands-on stations and multimedia as well as a nice museum café with access to the castle garden, the exhibition is a real experience for all the senses. The venue is further enriched by intriguing special exhibitions.

OPENING HOURS:

Tues to Sun from 10.00am to 5.00pm

CONTACT:

Museum im Wittelsbacher Schloss,
Schlossstr. 21, 86316 Friedberg,
Phone +49 821 6002-684,
museum@friedberg.de,
www.museum-friedberg.de



HISTORIC TOWN HALL AND MARIENBRUNNEN



On the central square Marienplatz, today's town hall designed in a late Renaissance style (1673/74) and the fountain of the same name with its Marian column dating from 1599 dominate the townscape.



TOWN WALL AND OLD TOWN ALLEYS



The town wall was originally built with a wooden, roofed wall-walk. Reconstructed remains with arrow slits can be visited on a tour. Nearly all the towers of the town wall are still completely preserved. The charming alleys and exciting viewpoints always have a surprise in store.

Download info and flyer:
Town tour I and II
"Lauschtour" audio tour

CHURCHES IN THE TOWN CENTRE



HERRGOTTSRUH



Built between 1731 and 1753, the highly frequented pilgrimage church of "Hergottsruh" (Our Lord's Peace), is one of the most beautiful Rococo style works in Bavaria. Masters such as Cosmas Damian Asam and Mattäus Günther as well as stucco-workers from the Wessobrunn artist family provided the wonderful harmony typical of this style.



ST. JAKOB'S PARISH CHURCH



St. Jakob's Parish Church was rebuilt in 1872/73 in a unique Neo-Romanesque style after the previous steeple had collapsed. It has been shaping the town's silhouette since then.



St. Stephan



St. Afra im Felde

EVENTS



ALL YEAR ROUND



Historic Old Town Festival

Friedberger Zeit

- "Friedberger Familienfasching" Carnival
- Midsummer pottery market in the municipal park
- "Fête de la musique"
- Open Air Weekends in Wittelsbach Castle
- "Friedberger Zeit" Historic festival in the heart of our historic centre with handicraft, music, theatre and delightful cuisine | Next festival: 4th to 13th July 2025
- "Friedberger Volksfest" Fair
- "Friedberger Musiksommer" Concert Cycle
- Friedberg Half Marathon
- "Friedberger Advent", a Romantic Christmas market featuring the "Nacht der Sterne", a long night of arts in the old town with complementary programme of exhibitions and concerts.

Infos: www.friedberg.de/kultur-tourismus/veranstaltungskalender



LEISURE - GET ON THE MOVE



HIKING AND CYCLING



Friedberg is easily explored on a signposted tour of the town or on the fascinating "Lauschtour" audio tour. Very well-marked hiking and cycling routes lead into the surrounding area and the idyllic hilly countryside of the Wittelsbacher Land. You can hike along the "Altbaierischer Oxenweg" (old Bavarian ox road) or follow the "Wittelsbacher Spuren" (traces of Wittelsbach) trail by bicycle. Supra-regional routes of the Romantic Road or a branch of the Way of St. James intersect in Friedberg.

Info: www.friedberg.de/tourismus, www.wittelsbacherland.de



"FRIEDBERGER SEE" LAKE



A local recreation area and popular bathing lake with a water ski and wake board facility

MOTORHOME CAMPSITES

Friedberger See

5 pitches up to 8 m, free of charge, asphalted surface, partly shaded, stays of up to 3 nights max.
Seestrasse, 86316 Friedberg



An der Gerberwiese

6 pitches up to 10 m, subject to charges, rough gravel surface, sunny. Electricity, fresh water and wastewater subject to charges, stays of up to 3 nights max.
Am Gerberweg 2, 86316 Friedberg



An der Wallfahrtskirche Herrgottsruh

4 pitches up to 10 m, free of charge, gravel surface, partly shaded, stays of up to 3 nights max.
Herrgottsruh Strasse 29, 86316 Friedberg



TRANSPORT LINKS

Friedberg railway station: Augsburg-Ingolstadt regional railway, AVV Augsburg, tramway line 6, regional bus lines
A8 Motorway

E-BIKE RENTAL

The Tourist Information Friedberg hires out trekking e-bikes. Rental over the weekend possible. Price 10 euros per day
Information and registration: touristinfo@friedberg.de

CHARGING POINTS

Free of charge

- Augsburg Str. 22, next to Saturn shop
- Ludwigstr. 38
- Volksfestplatz, Aichacher Str.

Subject to charges

- P&R terminal tramway line 6, Augsburg Str. 43 with bicycle rental

Charging points for e-cars

- P&R line 6 • Uhrmachergasse • Bahnhofstrasse
- Volksfestplatz • Gerberwiese • Derching, Winterbruckenweg



HOURS TOURIST OPENING INFO

Mon, Tues and Thurs: From 8.00am to 6.00pm
Weds, Fri: From 8.00am to 12.00pm



Toilets underground car park Tiefgarage Ost -
Ludwigstrasse Railway Station



STOPS AND RAILWAY STATION

Arrive comfortably from P&R Friedberg West by AVV bus lines 200 and 201 to the town centre or by train: From the train station it is only about 400 metres into the town centre. Friedberg is located on the Augsburg-Ingolstadt railway.



St Jakob



Marienplatz with town hall



Tourist Information



Wittelsbach Castle



Towers of the old town wall



Public swimming bath and sauna



Viewpoint



Playground



Vegan dishes



WiFi



Playground



"Die nette Toilette" public toilets



GASTRONOMY



ALAGAR KEBAP

Ludwigstraße 11
86316 Friedberg
Tel.: 0821/2590969



What makes our family-run business special: We use only the best ingredients from the region and prepare everything fresh in house, from our homemade doner kebab skewer to our artisan breads. Whether it's a kebab or a grilled dish, crispy pizza, soup, vegetarian food, crunchy salads or desserts, we have something for everyone. | [Opening hours: Tues to Sat from 10.00am to 9.00pm | Sun from 11.00am to 9.00pm | Closed: Monday and public holidays](#)



ALTSTADTKAFE WEISSGERBER

Ludwigstraße 10 | 86316 Friedberg
Tel.: 0821/6080222
cafe-weissgerber@t-online.de
www.cafe-weissgerber.de

You will find our special coffee house in the heart of Friedberg's old town. With a large selection of cakes and pies, fine pralines and chocolates, you'll be spoiled for choice. We offer breakfast, lunch, ice cream, coffee and cake. All homemade, of course.

[Opening hours: Mon to Sat from 8.30am to 6.00pm | Sun from 10.00am to 06.00pm | Closed: -](#)



ANGUS CLUB

Aichacher Straße 7 | 86316 Friedberg
Tel.: 0821/2678596
angusclub@angusclub.de
www.angusclub.de

Our juicy steaks and burgers are made on the Lava Grill. This gives the meat a special hint of flavour and that typical smoky taste. If you're looking for vegetarian dishes, this place is sure to be a hit, too! And why not crown a delightful evening by enjoying a glorious glass of gin or whiskey on the terrace..

[Please check online for opening hours.](#)



BÄCKEREI WOLF

Ludwigstraße 36 | 86316 Friedberg
Tel.: 0821/4509700
info@baeckerei-wolf.de
www.baeckerei-wolf.de

Welcome to our gorgeous café with an outdoor terrace. If you're looking for baked goods fresh from the oven all day long and an assortment of cakes, freshly made sandwiches, delicious snacks and an array of coffees, then look no further. Our secret is excellent quality. [Please check online for opening hours.](#)



BINENSTICH CAFÉ UND BAR

Jungbräustraße 4 | 86316 Friedberg
Tel.: 0821/25945549 | 0172/8535684
cafebinenstich@gmail.com
www.binenstichcafeundbar.de



A small café in the heart of Friedberg's old town. Enjoy the best cappuccino in gorgeous surroundings. We serve breakfast or vegetarian lunch that changes daily. In the evening, we transform into a bar with delicious starter plates that change weekly and delightful wines and cocktails. [Opening hours: Weds from 9.00am to 2.30pm | Thurs to Sat from 9.00am to 2.30pm and from 6.00pm to 10.30pm | Closed: Holidays and Sun to Tues](#)



BOMBAY PALACE

Stefanstraße 4b | 86316 Friedberg
Tel.: 0821/4869554
info@bombaypalacefriedberg.de
www.bombaypalacefriedberg.de

Immerse yourself in our restaurant's exotic aura and enjoy delicious Indian specialities exuding all the spices and flavours of the Far East. The restaurant - named after one of the most popular Hindu deities - serves up authentic Indian hospitality with a whole host of culinary delights. | [Opening hours: Mon to Sun from 11.30am to 2.30pm and from 5.30pm to 11.00pm | Sat from 5.30pm to 11.00pm | Closed: -](#)



BRAUEREIGASTHOF ST. AFRA IM FELDE

AFRASTRASSE 144
86316 Friedberg
Tel.: 0821/6089150
info@sankt-afra.eu
www.sankt-afra.eu

Cosy and lively, the guest room lies at the heart of every inn. Experience Bavarian hospitality and the unique diversity of our homemade beer and fine Bavarian delicacies.

[Opening hours: Tues to Sat from 11.00am | Closed: Sunday and Monday](#)



DA LEO

HERRGOTTSRUHSTR. 27B
86316 Friedberg
Tel.: 0821/59989474
cafedaleo@gmail.com

Relax in our cosy café and enjoy tasty cakes and specialty coffees as you take in the leafy green surroundings. For those with a hearty appetite, we serve up delicious homemade Italian dishes. In summer, our outdoor area gives you the perfect spot to linger under the lime trees. [Opening hours: Mon to Fri from 9.00am to 6.30pm | Sun from 9.00am to 6.30pm | Closed: Saturday](#)



DIVANO

Pfarrstraße 1 | 86316 Friedberg
Mobil: 0176/22 68 74 35
www.divano-friedberg.de

Divano - Kaffee, Kunst & Spirit - a meeting place right in the middle of the town. Just the spot for everyone, no matter what you fancy. It's the place where you'll find a friendly ear, support or just a moment of solace. Drop by for a little break from the everyday hustle and bustle, for a chat, a sociable get-together and so much more. | **Opening hours:** Tues and Thurs from 10.00am to 6.00pm, Fri from 9.00am to 6.00pm and Sun from 10.00am to 1.00pm



EISCAFE „TUTTI FRUTTI“

LUDWIGSTRASSE 41 | 86316 Friedberg
Tel.: 0151/11560455

Are you an ice cream fan? Then come on in and feast on our ice cream creations! More than 25 homemade ice cream varieties, small dishes, a cake and pie selection and an assortment of coffees await you in our ice cream parlour with outdoor area.

Opening hours: Daily from 8.00am to 10.00pm | Closed: –



EISCAFE AM BRUNNEN

Marienplatz 13 | 86316 Friedberg
Tel.: 0821/6600460

Enjoy original Italian ice cream and fine coffee specialities in our café or on the sunny terrace by the Marienbrunnen fountain right next to the historic town hall. **Opening hours:** every day from 10.00am to 11.00pm | Closed: Tuesday



EL GRECO

Bauernbräustr. 50 | 86316 Friedberg
Tel.: 0821/607792
pandelisgiannelos@yahoo.de
www.elgreco-fdb.de

... much more than just going out for a dinner! We prepare for you well-known and tasty dishes from different Greek provinces. We take care of your physical well-being with our perfect service and the quiet atmosphere of our restaurant. When the weather is fine, we invite you to our beer garden! | **Opening hours:** Tues to Sat from 11.30am to 2.30pm and from 5.30pm to 11.00pm | Closed: Monday



FISCHERHÜTTE FRIEDBERG

Afrastraße 76 | 86316 Friedberg
Tel.: 0821/605362
Mobil: 0173/5902501
www.fischerhuetten-friedberg.de

Fischerhütte is located right on the shore of the calm Lake Afrasee I. Our terrace and guest room have coffee, cake and hearty snacks, giving you a little pick-me-up when you need it. Guest room for up to approx. 60 people available for small events, celebrations or conferences. | **Opening hours:** Tues to Sat from 3.00pm to 10.00pm | Sunday if the weather is good from 12.00pm, if not from 3.00pm to 10.00pm | Closed: Monday



GAMBRINUSKELLER

Marienplatz 2 | 86316 Friedberg
Tel.: 0821/605566
www.pizzeria-friedberg.de
www.gambrinuskeller.info

In our rustic, stylish cellar vaults in the heart of Friedberg's old town you will find lovingly prepared Italian cuisine. We serve up fresh fish, pasta specialities or pizza baked in our stone oven. Enjoy the view of the town hall from our sunny terrace. Very good parking facility. Adjoining room for up to 40 people. | **Opening hours:** daily from 11.00am to 02.30pm and from 5.00pm to 11.00pm | Closed: Monday



GASTHAUS „JÄGERHAUS“

Pfarrer-Fiegl-Str. 26 | 86316 Friedberg
ST Ottmaring
Tel.: 0821/609648
info@jaegerhaus-friedberg.de
www.jaegerhaus-friedberg.de

Our cosy inn cooks up regional dishes with a changing dish of the day. Enjoy a cool beer and hearty snacks on our terrace in summer.

Opening hours: Mon to Thurs from 11.30am to 1.30pm and from 5.00pm to 10.00pm | Fri to Sat from 11.30am to 1.30pm | Sun from 6.00pm to 10.00pm



GASTHAUS GOLDENER STERN

Dorfstraße 1 | 86316 Friedberg
ST Rohrbach
Tel.: 08208/407
mail@gasthaus-goldenerstern.de
www.gasthaus-goldenerstern.de

Modern, Bavarian restaurant offering fine, sustainable award-winning cuisine, event loft for special celebrations. Wine bar boasting a wide selection of bottled wines. Why not come by and enjoy our garden? We are open at lunchtime.

Opening hours: Weds to Sat from 11.30am to 2.30pm and from 6.00pm to 12.00pm | Closed: Sunday, Monday, Tuesday



GASTHAUS WALDESRUH

Alte Bergstraße 22 | 86316 Friedberg
ST Derching
Tel.: 0821/782686
waldesruh-derching@web.de

Cosy village inn with a beer garden. Adjoining rooms available for events.

Opening hours: on request



GASTHOF „ZUR LINDE“

Münchner Str. 1 | 86316 Friedberg
Tel.: 0821/40884006
info@linde-friedberg.de
www.linde-friedberg.de

Come join us in our cosy inn and allow us to spoil you with Swabian-Bavarian delicacies. And if the weather is nice, why not stay and enjoy our well-kept beer garden?

Opening hours: Tues to Sun always open from 11.00am | Reservation recommended

Closed: Monday



GASTHOF KREISI

Herrgottsruhstr. 18 | 86316 Friedberg
Tel.: 0821/2679000
info@gasthof-kreisi.de
www.gasthof-kreisi.de

Our family-run inn is located just 200 m from the popular sight, the Herrgottsruh pilgrimage church. We serve up regional dishes. Vytal reusable packaging system. In summer, our outdoor terrace invites you to a cosy get-together!

Opening hours: Mon to Thurs from 11.00am to 2.00pm and from 05.00pm to 11.00pm | Fri from 5.00pm to 11.00 pm



RISTORANTE LA PIAZZETTA & LA PICCOLA PIAZZETTA

Ludwigstraße 44 | 86316 Friedberg
Tel.: 0821/603131
Tel.: 0821/2674204
www.piazzetta-friedberg.de

Indulge in our crispy pizza from the wood-fired oven and homemade pasta specialities. Fish enthusiasts are sure to be pleased to find fresh fish on our menu all the time. Selected wines from the best regions of Italy and in summer, why not savour the charm of our outside terrace and the bar in our small pub.

Opening hours: Mon to Sun from 11.30am to 2.30pm and from 05.30pm to 11.30pm | Closed: Tuesday



GASTSTÄTTE METZGER

Radegundisstr. 14 | 86316 Friedberg
ST Wulfertshausen
Tel.: 0821/781696
info@gaststaette-metzger.de
www.gaststaette-metzger.de

Cosy - Bavarian - Metzgerwirt

Indulge in Bavarian-Swabian delicacies from Wittelsbacher Land. We are looking forward to having you!

Opening hours: Weds to Sun from 10.00am | Closed: Monday, Tuesday



KÖPFHÄUSL

Bauernbräustr. 15 | 86316 Friedberg
Tel.: 0821/5977996
info@koepfhaeusl.de

Kick back and enjoy one of our five draught beers or meet up with friends for a good glass of wine by candlelight in a cosy old town ambience in the heart of Friedberg. The "Köpfhäusl" is the perfect place to have a few drinks and get away from everyday life. We look forward to seeing you soon!

Opening hours: Tues to Sun from 6.30pm | Closed: Monday



LANDGASTHOF LINDERMAYR

St.-Stefan-Str. 53 | 86316 Friedberg
ST Haberskirch
Tel.: 0821/783412
kontakt@gasthof-lindermayr.de
www.gasthof-lindermayr.de

Speciality chefs cook up a storm of homemade dishes using regional ingredients. Our motto: simply eat well!

Opening hours: Weds from 5.00pm to 10.00pm | Thurs to Sat from 10.00am to 10.00pm | Sun from 10.00am to 9.00pm Hot food served during opening hours: from 11.30am to 1.30pm and from 5.00pm to 08.00pm | Closed: Monday and Tuesday



MEVLANA DÖNER UND PIDE

Ludwigstraße 33
86316 Friedberg
Tel.: 0821/5085256

Located right at the entrance to the old town, tasty freshly prepared dishes like our home-made doner kebab made from regional meat, crunchy salads and oven-fresh pizza are just our thing! Whether you're in for takeaway food or sit a down meal, we can't wait to see you!

Opening hours: Mon to Sat from 10.00am to 9.00pm | Closed: Sunday | Open on holidays



MUSEUMSCAPÈ IM WITTELSBACHER SCHLOSS

Schlossstraße 21 | 86316 Friedberg
Tel.: 0821/6002-684
www.museum-friedberg.de

Enjoy coffee and cake in Wittelsbach Castle's Museum Café. And if the weather is good, then why not check out our idyllic outdoor terrace?

Opening hours: Tues to Sun and on most holidays from 10.00am to 5.00pm | Closed: Monday



PLATZHIRSCH FRIEDBERG

Bahnhofstraße 12 | 86316 Friedberg
Tel.: 01525/7272736
info@platzhirsch-friedberg.de
www.platzhirsch-friedberg.de

Espresso and wine bar: Coffee and wine are the epitome of delight and passion. We do both. Come and see yourself. Our shelves are bursting with everything coffee-related in addition to coffee machines, wine and spirits and other useful sustainable products.

Opening hours: Thur from 5.00pm to 10.00pm | Fri from 10.00am to 1.00pm and from 5.00pm to 10.00pm | Sat from 10.00am to 1.00pm



RAMBUTAN

Robert-Hartl-Str. 28 | 86316 Friedberg
Tel.: 0821/6502819
info@rambutan-asia.de
www.rambutan-asia.de

Indulge in our delicious cocktails along with all sorts of Japanese, Chinese, Korean, Vietnamese and Thai dishes. Our terrace is simply irresistible on cosy summer evenings. Ideally located on federal route B300.

Opening hours: Tues to Fri from 11.30am to 2.30pm and from 5.30pm to 11.00pm | Sat from 5.30pm to 11.00pm | Sun from 11.30am to 2.30pm and from 5.30pm to 11.00pm | Closed: Monday



ZIEGLERBRÄU

Marienplatz 14 | 86316 Friedberg
Tel.: 0821/66090993
info@gasthaus-friedberg.de
www.gasthaus-friedberg.de

A family business with heart. Regional home-style dishes. Wedding and events room for up to 140 people available. Enjoy a Augustiner beer right by the Marienplatz.

Opening hours: Hot food Mon from 11.00am to 9.00pm | Hot food Weds to Sun from 11.00am to 9.00pm | Inn open until 10.00pm. | Closed: Tuesday

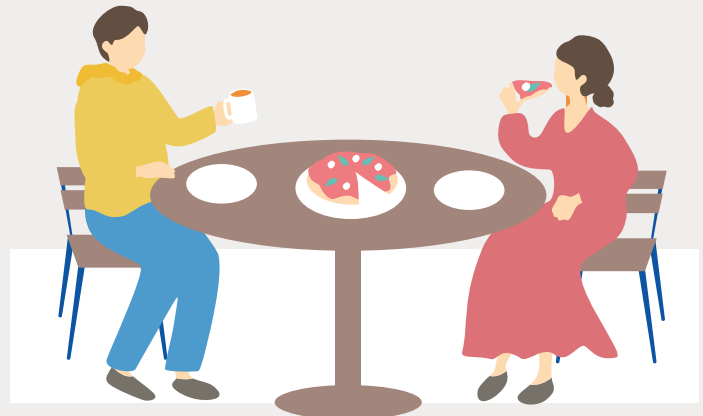


RISTORANTE FERRARI

Bauernbräustr. 15 | 86316 Friedberg
Tel.: 0821/59986510
info@ristorante-ferrari.de
www.ristorante-ferrari.de

In its cosy rooms steeped in history, Ristorante Ferrari will spoil you with a selection of fine drinks at the Aperitivo Bar. It cooks up Italian culinary delights as well as pizza from the stone oven. Our banqueting hall is also available for all kind of parties and events (100 p. capacity).

Opening hours: Mon-Sun from 11.30am to 02.00pm | Sat from 06.00pm | Closed: –





ACCOMMODATION

 Dogs permitted

 WiFi

 Parking



BRAUEREIGASTHOF ST. AFRA

Afrastraße 144 | 86316 Friedberg
Tel.: 0821/6089150
hotel@sankt-afra.eu
www.sankt-afra.eu



Built using ecological timber construction methods, this inn is located in picturesque, untouched surroundings, right next to the "Romantic Road" cycling track and the St. Afra pilgrimage church. | **Features:** Extensive breakfast buffet, accessible hotel rooms with disabled facilities, convention and event rooms, beer garden with chestnut trees | 4 charging points each for e-cars/e-bikes

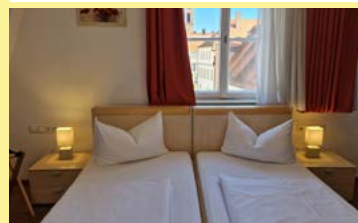


HOTEL ZUM BRUNNEN

Bauernbräustr. 4 | 86316 Friedberg
Tel.: 0821/600920
info@hotelzumbrunnen.de
www.hotelzumbrunnen.de



Right in the heart of Friedberg's old town, we have 15 modern and harmoniously furnished rooms in a quiet location with a view of the Brunnenhof passage roof terrace. **Features:** Central location, non-smoking hotel, breakfast buffet, rooms with bathtub, shower/toilet



HOTEL ZEITSPIEL

Bauernbräustr. 2 | 86316 Friedberg
Tel.: 0821/4555847
info@hotel-zeitspiel.de
www.hotel-zeitspiel.de



Located right in Friedberg's old town with a view of the town hall, we warmly welcome you to our 11 rooms.

Features: Extensive breakfast buffet, TV, comfortable and bright rooms, dogs not permitted, car parking (free of charge from 06.00pm) in the immediate vicinity.



GASTHOF KREISI

Herrgottsruhstr. 18 | 86316 Friedberg
Tel.: 0821/2679000
info@gasthof-kreisi.de
www.gasthof-kreisi.de



Small, family-run hotel in a quiet side street and a central location. 5 walking minutes from Friedberg's historic old town. Pilgrimage church "Herrgottsruh" within 200 m. Inn with home-style dishes and outside terrace. | **Features:** Breakfast buffet, non-smoking, car parking, bicycle rack, e-bike rental, motorhome parking spaces nearby, daily cleaning service, laundry service on request, extra child's bed available.



PARK AMBIENTE

Probststraße 14 | 86316 Friedberg
Tel.: 0821/44823497
info@park-ambiente.de
www.park-ambiente.de

This upscale, family-run hotel has 10 rooms with individual and modern décor.

Features: Non-smoking hotel located within a beautiful park setting, rooms with balcony and terrace, breakfast buffet.



VIKTORIAHAUS 1900

Mobil: 0171/9576888
vogler-hvw@mmnet-online.de

This spacious holiday apartment is located in a family-run house in Friedberg town centre. It has been family-owned since 1900 and has been completely refurbished with great attention to detail. There are restaurants, bakeries and supermarkets nearby.

Features: Stylish apartment on the ground floor, two bedrooms, small winter garden,



FERIENWOHNUNG BRANDL

Stadtmauer 35 | 86316 Friedberg
Tel.: 0821/66107408
Mobil: 0178/5917946
Mobil: 0176/22123642
info@fewo-fdb.de
www.fewo-fdb.de

This holiday apartment is located on the ground floor of a fully redeveloped old town house. Right next to Friedberg's town wall. A small garden in an idyllic location offers a fantastic view of the Alps. Perfect transport links by bus and rail (3-5 minutes on foot). | Features: A fully renovated apartment on the ground floor, approx. 65 sqm, one bedroom with double bed, one bedroom with double bed and sofa bed, bathroom with toilet and large shower, non-smoking.



PENSION GÄSTEZIMMER HEFELE

Meringer Straße 9 | 86316 Friedberg
Tel.: 0821/665552
Mobil: 0176/48067103
shefele@aol.com

Conveniently located rooms and holiday apartment (Romantic Road). Public transport links in the immediate vicinity, nearby shopping facilities. Railway station within 10 minutes on foot, Augsburg town centre within 10 minutes.

Features: Spacious, new rooms with modern facilities, single room, two triple rooms with TV, use of kitchen, holiday home suitable for up to 8 people, 4 bedrooms



DERCHING

HAUS DRAGL

Böhrmerwaldstr. 16a | 86316 Friedberg
Mobil: 0174/9772705
ottmardraxler@yahoo.de
www.hausdragl.de

Our newly renovated apartment is located on the 1st floor with two separate doors with a code for entry (access to apartment and access to double room). With a total area of 65 sqm, it can accommodate up to 7 people. Apartment: Sleeps 5, has a balcony, fully equipped kitchen, including washing machine and dish-washer. Bathroom with shower and separate toilet. Flatscreen TV and free WiFi. Features: Quiet location, modern, recently renovated.



DERCHING

GÄSTEHAUS KASTL

Bgm.-Schlickerrieder-Str. 20-22
86316 Friedberg
Tel.: 0821/784021

Our beautifully renovated, family-run guest house in the district of Derching is your perfect bed and breakfast. Excursions to Augsburg and Friedberg are possible, motorway connection to A8 within 1 km.

Features: Breakfast buffet in a cosy atmosphere, rooms with shower/toilet/TV.



DERCHING

GASTHAUS WALDESRUH

Alte Bergstraße 22 | 86316 Friedberg
Tel.: 0821/782686

Cosy inn with rooms. Quiet location in the district of Derching. Close to Augsburg and motorway connection to A8 Friedberg/Derching. Ideal for fitters.

Features: Shared bathroom/shower/toilet, breakfast on request, dinner available



DERCHING

EUROHOTEL FRIEDBERG

Winterbrückenweg 51 | 86316 Friedberg
Tel.: 0821/2594000
info@eurohotelfriedberg.de
www.eurohotelfriedberg.de

Relax after a long drive or an intense day at work in our modern, air-conditioned 23 sqm rooms. A bar with bistro area and 24 hour check-in round off our offer.

Features: Business rooms, phone, ISDN connection, laptop-safe, bathroom with shower, hairdryer, make-up mirror, desk with seating area



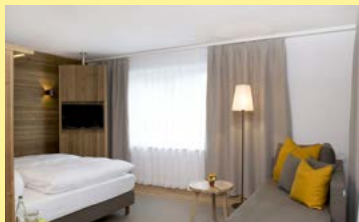
HABERSKIRCH



LANDGASTHOF LINDERMAYR

St.-Stefan-Str. 53 | 86316 Friedberg
Tel.: 0821/783412
kontakt@hotel-lindermayr.de
www.gasthof-lindermayr.de

We have eight friendly and bright rooms with a total of 17 beds on our recently developed upper floor. In addition to a toilet and a shower in the room, our overnight guests have a hair-dryer, TV and a free internet network connection at their disposal. The quiet, rural location is a great place to spend the night. | **Features:** Breakfast buffet in our cosy inn or winter garden, TV, bicycle shed



HARTHAUSEN



APARTMENT MICHL

Dasinger Str. 61 | 86316 Friedberg
Tel.: 08208/9573131
Mobil: 0160/4117770
info@apartment-michl.de
www.apartment-michl.de

Nestled in a beautiful landscape, Michl, an apartment with modern furnishings, is located right on the Old Bavarian Ox Road. It is near Dasing, Friedberg and the centre of Augsburg, which is only 12 km away. Good transport link to motorway A8 and federal route B300. **Features:** New modern furniture, oak parquet floor, 32" TV, elegant bathrooms, fully equipped kitchens with dishwasher and microwave, double rooms with a balcony, e-bike rental



OTTMARING



PENSION JÄGERHAUS

Pfarrer-Fiegl-Str. 26 | 86316 Friedberg
Tel.: 0821/609648
info@jaegerhaus-friedberg.de
www.jaegerhaus-friedberg.de

Our family-run bed and breakfast is located in a quiet location on the outskirts of the village near the Romantic Road. Modern furnishings and cosy rooms. **Features:** Breakfast, TV, shower/toilet, non-smoking, lunch and dinner available, bicycle shed, dogs permitted on request



OTTMARING



FERIENWOHNUNG MANG

Wanderweg 16 | 86316 Friedberg
Tel.: 0821/609294
roland.sonnemann@mnet-mail.de

Beautiful, quiet spot in a friendly neighbourhood. Single room letting available. **Features:** 3 double rooms, shared kitchen, 1 bathroom and 1 lounge with large dining table, non-smoking, bread roll delivery service or breakfast on request, final cleaning included, bedlinen is provided.



WULFERTSHAUSEN



ANAS LANDHAUS

Radegundisstr. 20 | 86316 Friedberg
Tel.: 0821/2799572
info@anas-landhaus.de
www.anas-landhaus.de

Country bed and breakfast with modern equipment and family-friendly hospitality. Excellent motorway link to A8. Short distance to the historic centres of Friedberg and Augsburg. Ideal for holidaymakers and business travellers. Breakfast on advance booking **Features:** Bright rooms, charmingly furnished in country style with TV, modern bathroom (shower/toilet) with window, bicycle rental, inn with home-style dishes in close proximity.



WULFERTSHAUSEN



FERIENWOHNUNGEN „DAHEIM“

Nordstraße 22+24 | 86316 Friedberg
Tel.: 0821/577474
Mobil: 0151/19645020
pension-daheim@gmx.de

Family-friendly accommodation, quiet location. Nearby bathing lake with water skiing, horse riding and minigolf. Bicycle tours through the Wittelsbacher Land / along the Romantic Road. Public transport links to Friedberg and Augsburg. Railway station Friedberg within 4 km. | **Features:** Apartment for 6 people, kitchen/living, bathroom/shower/toilet, TV, bedlinen, towels, bicycle rental, garden/roofed terrace with BBQ facility, inn nearby. Dogs permitted on request.



WIFFERTSHAUSEN



FERIENWOHNUNG SEITZ

Kreuzäcker 18 | 86316 Friedberg
Mobil: 0179/2986655
seichristian@web.de

Fully equipped apartment on the outskirts of Friedberg. 48 sqm with modern fitted kitchen and bathroom. Augsburg within 8 min., motorway A8 within 10 min. and Friedberg within 2 min. Ideal for business travellers, workers and holiday makers. Price for longer stay negotiable. | **Features:** Satellite internet access, shower/toilet/linen, fitted kitchen with microwave, washing machine, roofed terrace with BBQ, separate entry.



WE ARE LOOKING FORWARD TO YOUR VISIT!

Opening hours of the Tourist Information in the town office:
Mon, Tues, Thurs from 08.00am to 6.00pm
Weds, Fri from 8.00am to 12.00pm

IMPRESSUM

Information: Town of Friedberg
Phone +49 821 6002-450, -451, -436
touristinfo@friedberg.de
www.friedberg.de/tourismus
publisher: Town of Friedberg

Photos: Town of Friedberg, Claudia Becher, Erciyas Photodesign, Stefan Heinrich, Florian Trykowski, Linkel, Reinhold Ratzer · Editorial design Isabel König · As of December 2023

www.friedberg.de